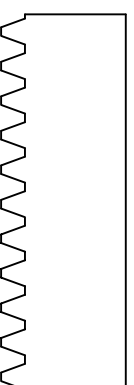
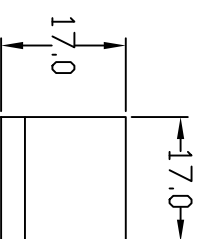
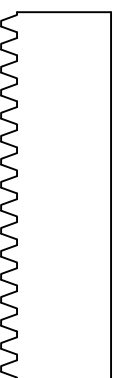
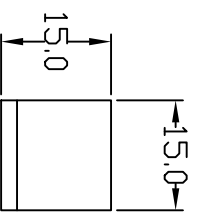
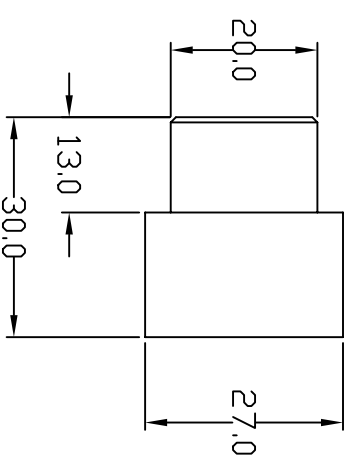
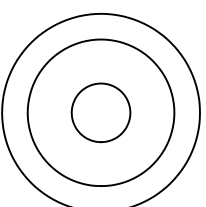
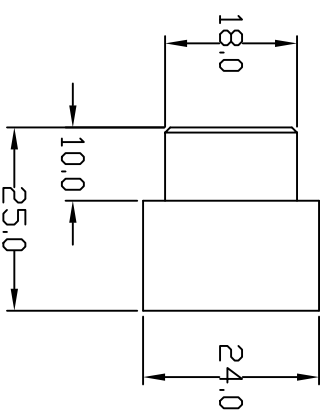
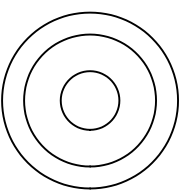


Module 1  
22t Pinion



Module 1.5  
16t Pinion



INFO:  
 Diameter = Mod No. x No. of teeth  
 Circumference = pi x No. teeth x Mod No.

10 October 2008

[www.CNCDirect.co.za](http://www.CNCDirect.co.za)

Module 1 & 1.5 Rack+ Pinion